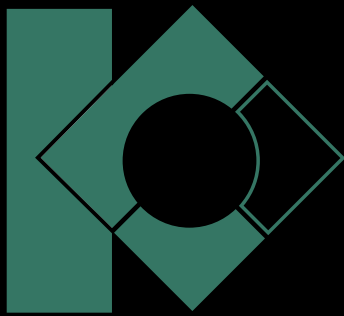
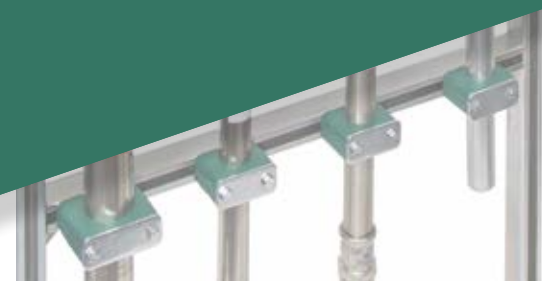


KOVA CLAMPS



**CLAMPS FOR
INDUSTRIAL PIPE,
TUBE & HOSE**





Kova Clamps

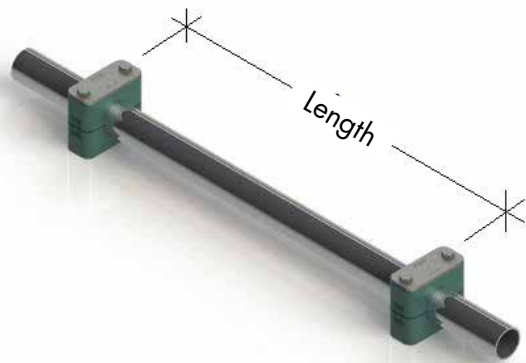
Kova clamps are a proven modular design that has broad industry acceptance, and comply with the universally recognised DIN 3015.

Designed to give your project reliable and easy installation with a neat professional functionality, use of Kova clamps also reduces transmitted pipe noise and vibration. They come with a wide range of sizes and materials, this catalogue sets out the common configurations in user-friendly complete-assembly tables to save you time and money and to make your selection process very easy.

Kova clamps are suited for Pipe, tube or hose installations. The grooved internal clamps are recommended for pipe or tube applications, while the smooth bore clamps are recommended for hose applications. Dimensions of grooved clamp bodies provide for a tension clearance between clamp halves. Smooth bore clamp halves are designed without the additional tension clearance.

Kova Clamps are ideal for:

- Industrial Hydraulics
- Mobile Hydraulics
- Marine Hydraulics
- Rail transport
- Construction vehicles
- Offshore
- General Industrial Pipe Construction
- Mining Industry
- Nuclear Reactor Construction
- Instrumentation and Control Technology
- Pneumatics
- Oil and fuel lines
- Process lines



As installation of Kova clamps is beyond our control, it remains the responsibility of the user to assure themselves of the suitability of each application. Kova clamps are available in a wide spectrum of combinations, both the body materials and the metal hardware. Speak to our technical department for specialist applications.

We are constantly growing and improving our range, so if the product you want is not listed here, ask—we are here to help and if we don't have an existing solution, we will find or create a new solution.

We are passionate about our customer oriented service, and in delivering the goods when and where you need them.

Recommended clamp spacing

Pipe O.D. (mm)	Span Length (m)
6–14	0.9
15–22	1.2
23–28	1.5
30–38	2
40–48.3	2.5
50–57	3
60.3–70	3.4
73–88.9	3.7
90–108	4
114–140	4.3
140–165.1	5
168.3–220	5.5

Kova Clamps

If welding base plates to a support structure, welding must be done before clamp halves are assembled on the base.

A standard feature of clamps, screws, rail nuts and cover plates are chromium VI free zinc coated, welding plates are phosphated and mounting rails are galvanised. All metal parts are available in stainless steel type W5 (AISI 316). Other surface treatments are available upon request.

There is a range of materials available to cover most applications whether it be temperature related or chemical resistance.



For easy identification, Kova clamps have both the body group and the size moulded into the body.

Illustrated—
Gr.L6 (Light series group 6)
Ø 50.8 (diameter 50.8 mm)

INDEX

Page No	Contents
2	Clamp spacings
3	Clamp materials
4	Clamping force
5	Kova ordering code matrix
6, 7	Light series, single bolt,
8, 9	Light series, welded base
10, 11	Light series, bolted base
12, 13	Light series, Kova rail mount
14, 15	Light series, stacking
16, 17	Heavy series, welded base
18, 19	Heavy series, bolted base
20, 21	Heavy series, Kova rail mount
22, 23	Heavy series, stacking
24, 25	Twin series
26	Kova mounting rails
27	Strut mounting rails

Chemical Resistance	Polypropylene -30 - +90°C	Polyamide -40 - +120°C	Aluminium -40 - +300°C
Weak Acids	limited resistance	limited resistance	limited resistance
Weak Alkalis	limited resistance	limited resistance	limited resistance
Alcohol	resistant	resistant	resistant
Petrol	limited resistance	resistant	resistant
Mineral Oils	limited resistance	resistant	resistant
Other Oils	resistant	resistant	resistant

KOVA CLAMP MATERIALS

Code	Material	Colour	Temp Range °C	Density	Impact Resistance	Bending Strength	Compressive Strength	Modulus of Elasticity	Tensile Stress
P	Polypropylene	Green	-30 +90	0.906 g/cm ²	no fracture	36 N/mm ²	90 N/mm ²	1500 N/mm ²	25-35 N/mm ²
M	Polyamide	Black	-40 +120	1.12 - 1.15 g/cm ²	no fracture	130-200 N/mm ²	120 N/mm ²	3000 N/mm ²	80-90 N/mm ²
A	Aluminium	Natural	-50 +300						
C	Steel		-80 +500						
O	POM		-80 +500						
S	Stainless steel	Natural	-80 +500						



Clamping Force

Light Series (DIN 3015, part 1)					
Clamp body group	Hex Head Bolt	Polypropylene		Polyamide	
		Bolt tightening torque Nm	Clamping force kN	Bolt tightening torque Nm	Clamping force kN
0	M6	8	0.6	10	0.6
1	M6	8	1.1	10	0.7
2	M6	8	1.3	10	0.8
3	M6	8	1.4	10	1.6
4	M6	8	1.5	10	1.7
5	M6	8	1.9	10	2
6	M6	8	2	10	2.5

Heavy Series (DIN 3015, part 2)					
Clamp body group	Hex Head Bolt	Polypropylene		Polyamide	
		Bolt tightening torque Nm	Clamping force kN	Bolt tightening torque Nm	Clamping force kN
1	M10	12	1.6	20	4.2
2	M10	12	2.9	20	4.5
3	M10	15	3.3	25	5.1
4	M12	30	8.2	40	9.3
5	M16	45	11	55	21.3
6	M20	80	14	150	25.8
7	M24	110	28	200	32
8	M30	180	40	350	48

Twin Series (DIN 3015, part 3)					
Clamp body group	Hex Head Bolt	Polypropylene		Polyamide	
		Bolt tightening torque Nm	Clamping force kN	Bolt tightening torque Nm	Clamping force kN
1	GB5782-86	5	0.9	5	0.9
2	M6	12	2.1	12	2.2
3	M8	12	1.9	12	2
4	M8	12	2.7	12	2.9
5	M8	8	1.7	8	2.5

KOVA Ordering Matrix

COMPLETE SET MATRIX

K S H P G • 4 2 0150

KOVA Prefix
Plates and Bolt Material

- S:** 316 SS
- U:** 304 SS
- Z:** Galvanised

Series

- L:** Light
- T:** Twin
- H:** Heavy

Body Material

- P:** Polypropylene
- M:** Polyamide
- A:** Aluminium alloy
- C:** Steel
- O:** POM
- S:** Stainless Steel

Interior Surface

- G:** Grooved
- S:** Smooth
- V:** Anti-vibration insert

Combination

- 3:** Hex bolts, cover plate, clamp body, welded base plate
- 4:** Hex bolts, cover plate, clamp body, long base plate
- 6:** Hex bolts, cover plate, clamp body, rail nuts
- 9:** Stacking bolts, safety lock plate, clamp body

Clamp Body Group

- 0:** Single bolt 6 – 12mm
- 1:** Double bolt 6 – 12mm
- 2:** Double bolt 12.7 – 18mm
- 3:** Double bolt 19 – 25mm
- 4:** Double bolt 26.9 – 30mm
- 5:** Double bolt 32 – 42mm
- 6:** Double bolt 44.5 – 54mm
- 7:** Double bolt 57.2 – 76.1mm
- 8:** Double bolt 88.9 – 102mm
- 9:** Double bolt

Pipe O.D

See required 'Clamp Combination Page'

SPARE PARTS MATRIX

K S L – G • 4 0150

KOVA Prefix
Plate and Bolt Material

- S:** 316 SS
- Z:** Galvanised

Series

- L:** Light
- T:** Twin
- H:** Heavy

Spare Part

- B:** Bolt
- C:** Stacking Bolt
- E:** Extended Base Plate
- G:** Grooved Body
- L:** Lock Plate
- M:** Mounting Plate for Strut
- N:** Rail Nut
- R:** Rail
- S:** Smooth Body
- T:** Top Plate
- U:** Universal Strut Nut
- V:** Anti Vibration Shell
- W:** Welded Base Plate

Clamp Body Group

- 0:** Single bolt 6 – 12mm
- 1:** Double bolt 6 – 12mm
- 2:** Double bolt 12.7 – 18mm
- 3:** Double bolt 19 – 25mm
- 4:** Double bolt 26.9 – 30mm
- 5:** Double bolt 32 – 42mm
- 6:** Double bolt 44.5 – 50.8mm
- 7:** Double bolt 57.2 – 76.1mm
- 8:** Double bolt 88.9 – 102mm
- H4:** Heavy Double bolt 42 – 70mm
- H5:** Heavy Double bolt 70 – 89.9mm
- H6:** Heavy Double bolt 89.9 – 133mm
- H7:** Heavy Double bolt 133 – 168mm
- H8:** Heavy Double bolt 168 – 219mm
- H9:** Heavy Double bolt 219 – 324mm
- H10:** Heavy Double bolt 356 – 406mm
- H11:** Heavy Double bolt 419 – 508mm

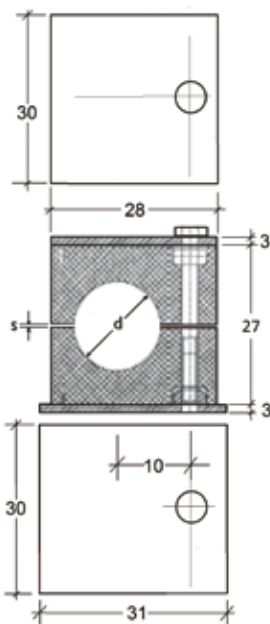
Pipe O.D

See required 'Clamp Combination Page'



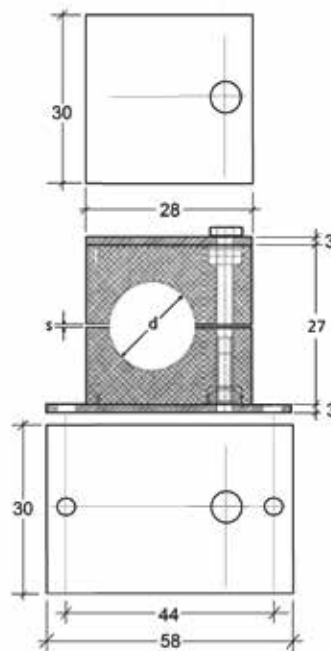
Light Series Single Bolt Clamp Sets

KOVA CLAMP	K	S	L	P	G	•	4	0	0150	Pipe O.D
Plates & Bolts										Clamp Body Group
S:										Single bolt 6 – 12mm
U:										
Z:										
Series										Combination
L:										3: Hex bolts, cover plate, clamp body, welded base plate
Material										4: Hex head bolts, cover plate, clamp body, long base plate
P:										6: Hex bolts, cover plate, clamp body, rail nuts
M:										Interior surface
A:										G: Grooved
C:										S: Smooth
O:										
S:										



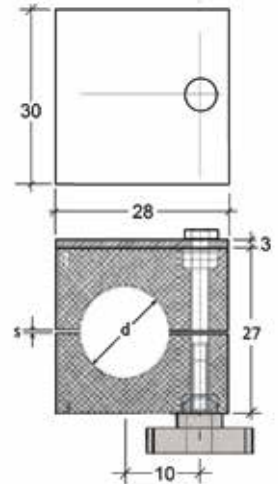
Light Series Combination 3

Hex head bolt, cover plate, clamp body, welded base plate



Light Series Combination 4

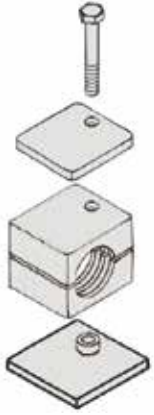
Hex head bolt, cover plate, clamp body, bolted base plate



Light Series Combination 6

Hex head bolt, cover plate, clamp body, rail nut

LIGHT SERIES SINGLE BOLT KOVA CLAMPS

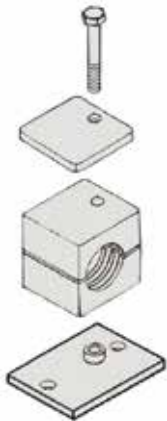


Combination 3 series light single bolt clamps

Part #	Clamp body group	d diameter mm	Pipe OD code	inch OD	s tension clearance	B1 bolt
K_L_G.300060	0	6	0060		0.4	M6 x 30
K_L_G.300064		6.4	0064	1/4		
K_L_G.300080		8	0080	5/16		
K_L_G.300095		9.5	0095	3/8		
K_L_G.300010		10	0100			
K_L_G.300120		12	0120			

Light series Combination 3

Hex head bolt, cover plate, clamp body, welded base plate



Combination 4 series light single bolt clamps

Part #	Clamp body group	d diameter mm	Pipe OD code	inch OD	s tension clearance	B1 bolt
K_L_G.400060	0	6	0060		0.4	M6 x 30
K_L_G.400064		6.4	0064	1/4		
K_L_G.400080		8	0080	5/16		
K_L_G.400095		9.5	0095	3/8		
K_L_G.400010		10	0100			
K_L_G.400120		12	0120			

Light series Combination 4

Hex head bolt, cover plate, clamp body, bolted base plate



Combination 6 series light single bolt clamps

Part #	Clamp body group	d diameter mm	Pipe OD code	inch OD	s tension clearance	B1 bolt
K_L_G.600060	0	6	0060		0.4	M6 x 30
K_L_G.600064		6.4	0064	1/4		
K_L_G.600080		8	0080	5/16		
K_L_G.600095		9.5	0095	3/8		
K_L_G.600010		10	0100			
K_L_G.600120		12	0120			

Light series Combination 6

Hex head bolt, cover plate, clamp body, rail nut

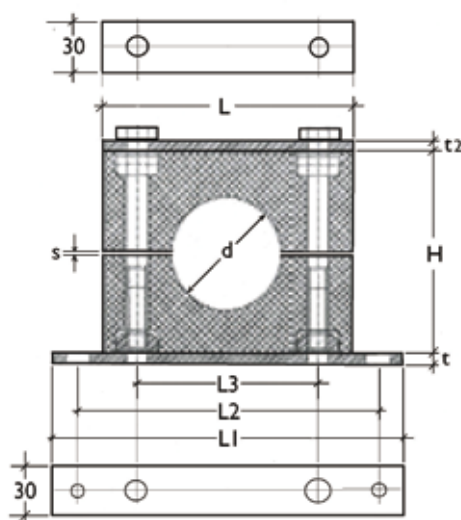
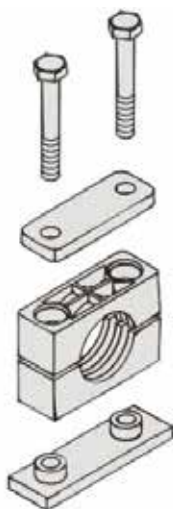
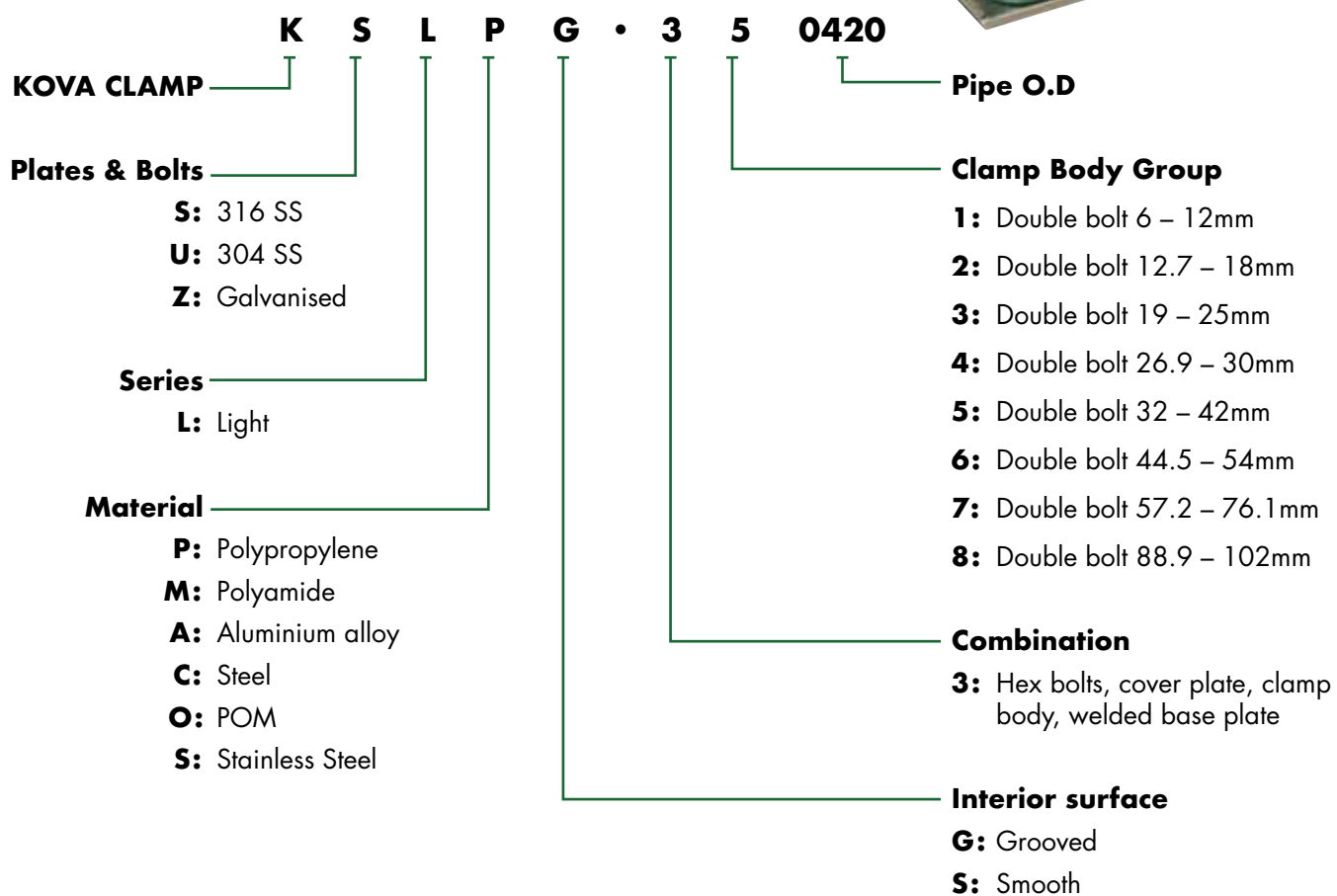




DIN 3015

Light Series Combination 3

Welded base, hex head bolts,
cover plate, clamp body



LIGHT SERIES WELDED KOVA CLAMPS

LIGHT SERIES Combination 3												
Part #	Clamp body group	d diam. mm	Pipe OD code	inch ID	inch OD	L mm	L1 mm	L3 mm	H mm	s tension clearance mm	t mm	t2 mm
K_L_G.310060	1	6	0060			37	37	20	27	0.4	3	3
K_L_G.310064		6.4	0064		¼							
K_L_G.310080		8	0080		5/16							
K_L_G.310950		9.5	0095		3/8 tube							
K_L_G.310100		10	0100	1/8								
K_L_G.310120		12	0120									
K_L_G.320127	2	12.7	0127		½ tube	42	42	26	33	0.6	3	3
K_L_G.320135		13.5	0135	¼								
K_L_G.320140		14	0140									
K_L_G.320150		15	0150									
K_L_G.320160		16	0160		5/8							
K_L_G.320172		17.2	0172	3/8								
K_L_G.320180	3	18	0180			50	50	33	36	0.6	3	3
K_L_G.330195		19.5	0195		¾ tube							
K_L_G.330200		20	0200									
K_L_G.330213		21.3	0213	½	pipe							
K_L_G.330220		22	0220	7/8								
K_L_G.330250		25	0250		1 tube							
K_L_G.340269	4	26.9	0269	¾	pipe	59	59	40	42	0.6	3	3
K_L_G.340280		28	0280									
K_L_G.340300		30	0300									
K_L_G.350320	5	32	0320		1 ¼ tube	71	71	52	58	0.8	3	3
K_L_G.350337		33.7	0337	1	pipe							
K_L_G.350350		35	0350									
K_L_G.350380		38	0380		1 ½ tube							
K_L_G.350400		40	0400									
K_L_G.350420		42	0420	1 ¼	pipe							
K_L_G.360445	6	44.5	0445		1 ¾	86	86	66	66	0.8	3	3
K_L_G.360483		48.3	0483	1 ½	pipe							
K_L_G.360508		50.8	0508		2 tube							
K_L_G.360540		54	540									
K_L_G.370572	7	57.2	0572		2 ¼	121	121	94	93	0.8	5	5
K_L_G.370603		60.3	0603	2	pipe							
K_L_G.370635		63.5	0635		2 ½							
K_L_G.370700		70	0700		2 ¾							
K_L_G.370730		73	0730									
K_L_G.370761		76.1	0761	2 ½	3 tube							
K_L_G.380889	8	88.9	0889	3	pipe	147	147	120	118	0.8	5	5
K_LPG.381020		102	1020		4							



DIN 3015

Light Series Combination 4

Bolted base plate, hex head bolts, cover plate, clamp body



K O V A C L A M P — **K** — **S** — **L** — **P** — **G** • **4** — **2** — **0150**

Plates & Bolts

S: 316 SS

U: 304 SS

Z: Galvanised

Series

L: Light

Material

P: Polypropylene

M: Polyamide

A: Aluminium alloy

C: Steel

O: POM

S: Stainless Steel

Pipe O.D

Clamp Body Group

1: Double bolt 6 – 12mm

2: Double bolt 12.7 – 18mm

3: Double bolt 19 – 25mm

4: Double bolt 26.9 – 30mm

5: Double bolt 32 – 42mm

6: Double bolt 44.5 – 54mm

7: Double bolt 57.2 – 76.1mm

8: Double bolt 88.9 – 102mm

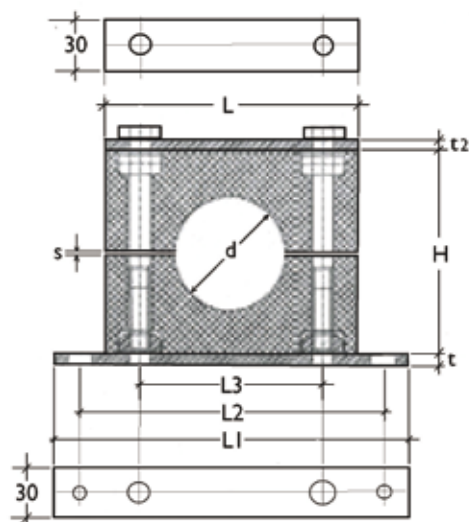
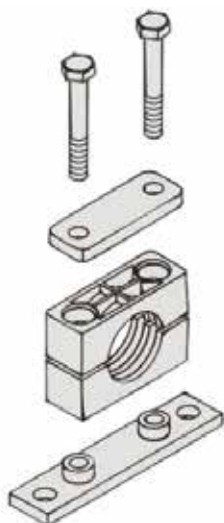
Combination

4: Hex bolts, cover plate, clamp body, long base plate

Interior surface

G: Grooved

S: Smooth



LIGHT SERIES BOLTED KOVA CLAMPS

LIGHT SERIES Combination 4														
Part #	Clamp body group	d diam. mm	Pipe OD code	inch ID	inch OD	L	L1	L2	L3	H	s tension clearance	t	t2	
K_L_G.410060	1	6	0060			37	64	50	20	27	0.4	3	3	
K_L_G.410064		6.4	0064		1/4									
K_L_G.410080		8	0080		5/16									
K_L_G.410095		9.5	0095		3/8									tube
K_L_G.410010		10	0100	1/8										
K_L_G.410120		12	0120											
K_L_G.420127	2	12.7	0127		1/2	tube	42	70	56	26	33	0.6	3	3
K_L_G.420135		13.5	0135	1/4										
K_L_G.420140		14	0140											
K_L_G.420150		15	0150											
K_L_G.420160		16	0160		5/8									
K_L_G.420172		17.2	0172	3/8										
K_L_G.420180		18	0180											
K_L_G.430195	3	19.5	0195		3/4	tube	50	78	64	33	36	0.6	3	3
K_L_G.430200		20	0200											
K_L_G.430213		21.3	0213	1/2		pipe								
K_L_G.430220		22	0220		7/8									
K_L_G.430250		25	0254		1	tube								
K_L_G.440269	4	26.9	0269	3/4		pipe	59	87	73	40	42	0.6	3	3
K_L_G.440280		28	0280											
K_L_G.440300		30	0300											
K_L_G.450320	5	32	0320		1 1/4	tube	71	100	86	52	58	0.8	3	3
K_L_G.450337		33.7	0337	1		pipe								
K_L_G.450350		35	0350											
K_L_G.450380		38	0380		1 1/2	tube								
K_L_G.450400		40	0400											
K_L_G.450420		42	0420	1 1/4		pipe								
K_L_G.450445	6	44.5	0445		1 3/4	86	115	100	66	66	0.8	3	3	
K_L_G.460483		48.3	0483	1 1/2										pipe
K_L_G.460508		50.8	0508		2									tube
K_L_G.460540		54	0540											
K_L_G.460572	7	57.2	0572		2 1/4	121	150	136	94	93	0.8	3	5	
K_L_G.470603		60.3	0603	2										pipe
K_L_G.470635		63.5	0635		2 1/2									
K_L_G.470700		70	0700		2 3/4									
K_L_G.470730		73	0730											
K_L_G.470761	8	76.1	0761	2 1/2	3	tube	147	178	162	120	118	0.8	3	5
K_L_G.480889		88.9	0889	3		pipe								
K_L_G.481020		102	1020		4									



DIN 3015

Light Series Rail Mounted Combination 6

hex head bolts, cover plate,
clamp body, rail nuts*

*to suit Kova rail (see page 26)

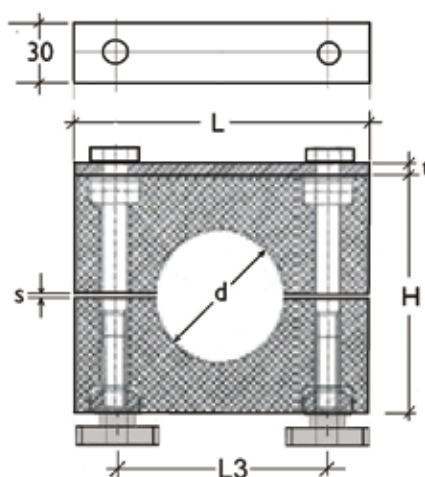


K S L P G • 6 2 0150									
KOVA CLAMP									Pipe O.D
Plates & Bolts									Clamp Body Group
S:	316 SS								1: Double bolt 6 – 12mm
U:	304 SS								2: Double bolt 12.7 – 18mm
Z:	Galvanised								3: Double bolt 19 – 25mm
Series									4: Double bolt 26.9 – 30mm
L:	Light								5: Double bolt 32 – 42mm
Material									6: Double bolt 44.5 – 54mm
P:	Polypropylene								7: Double bolt 57.2 – 76.1mm
M:	Polyamide								8: Double bolt 88.9 – 102mm
A:	Aluminium alloy								Combination
C:	Steel								6: Hex bolts, cover plate, clamp body, rail nuts
O:	POM								
S:	Stainless Steel								Interior surface
									G: Grooved
									S: Smooth



Light Series Clamp Sets

Light series Combination 6
Hex head bolts, cover plate,
clamp body, rail nuts



LIGHT SERIES RAIL MOUNTED KOVA CLAMPS

LIGHT SERIES Combination 6											
Part #	Clamp body group	d diam. mm	Pipe OD code	inch ID	inch OD	L mm	L3 mm	H mm	s tension clearance mm	t mm	B1 bolt
K_L_G.610060	1	6	0060			37	20	27	0.4	3	M6 x 30
K_L_G.610064		6.4	0064		¼						
K_L_G.610080		8	0080		5/16						
K_L_G.610950		9.5	0095		3/8 tube						
K_L_G.610100		10	0100	1/8							
K_L_G.610120		12	0120								
K_L_G.620127	2	12.7	0127		½ tube	42	26	33	0.6	3	M6 x 35
K_L_G.620135		13.5	0135	¼							
K_L_G.620140		14	0140								
K_L_G.620150		15	0150								
K_L_G.620160		16	0160		5/8						
K_L_G.620172		17.2	0172	3/8							
K_L_G.620180		18	0180								
K_L_G.630195	3	19.5	0195		¾ tube	50	33	36	0.6	3	M6 x 40
K_L_G.630200		20	0200								
K_L_G.630213		21.3	0213	½	pipe						
K_L_G.630220		22	0220		7/8						
K_L_G.630250		25	0250		1 tube						
K_L_G.640269	4	26.9	0269	¾	pipe	59	40	42	0.6	3	M6 x 45
K_L_G.640280		28	0280								
K_L_G.640300		30	0300								
K_L_G.650320	5	32	0320		1 ¼ tube	71	52	58	0.8	3	M6 x 60
K_L_G.650337		33.7	0337	1	pipe						
K_L_G.650350		35	0350								
K_L_G.650380		38	0380		1 ½ tube						
K_L_G.650400		40	0400								
K_L_G.650420		42	0420	1 ¼	pipe						
K_L_G.660445	6	44.5	0445		1 ¾	86	66	66	0.8	3	M6 x 70
K_L_G.660483		48.3	0483	1 ½	pipe						
K_L_G.660508		50.8	0508		2 tube						
K_L_G.660540		54	0540								
K_L_G.670572	7	57.2	0572		2 ¼	121	94	93	0.8	5	M6 x 100
K_L_G.670603		60.3	0603	2	pipe						
K_L_G.670635		63.5	0635		2 ½						
K_L_G.670700		70	0700		2 ¾						
K_L_G.670730		73	0730								
K_L_G.670761		76.1	0761	2 ½	3 tube						
K_L_G.680889	8	88.9	0889	3	pipe	147	120	118	0.8	5	M6 x 125
K_L_G.681020		102	1020		4						



DIN 3015

Light Series Stacking Clamp Sets Combination 9

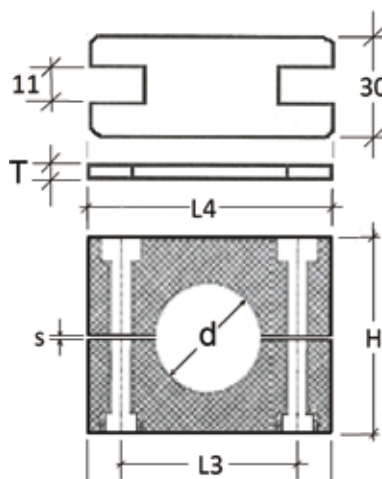
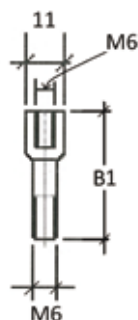
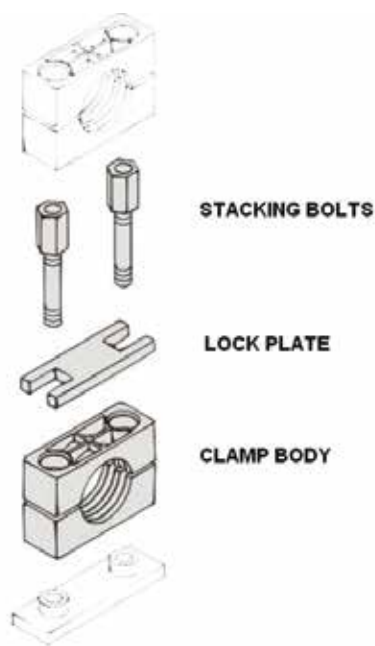
Stacking bolts, lock plate, clamp body*

Maximum stack, – 5 high

*Note: To be ordered with corresponding combination
3, 4 or 6 set



KOVA CLAMP	K	S	L	P	G	•	9	2	0150	Pipe O.D
Plates & Bolts										Clamp Body Group
		S: 316 SS								1: Double bolt 6 – 12mm
		U: 304 SS								2: Double bolt 12.7 – 18mm
		Z: Galvanised								3: Double bolt 19 – 25mm
Series										4: Double bolt 26.9 – 30mm
			L: Light							5: Double bolt 32 – 42mm
Material										6: Double bolt 44.5 – 54mm
										7: Double bolt 57.2 – 76.1mm
										8: Double bolt 88.9 – 102mm
										Combination
										9: Stacking bolts, safety lock plate, clamp body
										Interior surface
										G: Grooved
										S: Smooth



LIGHT SERIES STACKING KOVA CLAMPS

LIGHT SERIES Combination 9											
Part #	Clamp body group	d diam. mm	Pipe OD code	inch ID	inch OD	L mm	L3 mm	H mm	s tension clearance mm	L4 lock plate	B1 bolt
K_L_G.910060	1	6	0060			37	20	27	0.4	34	M6 x 34
K_L_G.910064		6.4	0064		1/4						
K_L_G.910080		8	0080		5/16						
K_L_G.910095		9.5	0095		3/8						
K_L_G.910100		10	0100	1/8							
K_L_G.910120		12	0120								
K_L_G.920127	2	12.7	0127		1/2	42	26	33	0.6	40	M6 x 40
K_L_G.920135		13.5	0135	1/4							
K_L_G.920140		14	0140								
K_L_G.920150		15	0150								
K_L_G.920160		16	0160		5/8						
K_L_G.920172		17.2	0172	3/8							
K_L_G.920180		18	0180			50	33	36	0.6	47	M6 x 44
K_L_G.930195	3	19.5	0195		3/4						
K_L_G.930200		20	0200								
K_L_G.930213		21.3	0213	1/2							
K_L_G.930220		22	0220		7/8						
K_L_G.930250		25	0250		1						
K_L_G.940269	4	26.9	0269	3/4		59	40	42	0.6	56	M6 x 48
K_L_G.940280		28	0280								
K_L_G.940300		30	0300								
K_L_G.950320	5	32	0320		1 1/4	71	52	58	0.8	69	M6 x 64
K_L_G.950337		33.7	0337	1							
K_L_G.950350		35	0350								
K_L_G.950380		38	0380		1 1/2						
K_L_G.950400		40	0400								
K_L_G.950420		42	0420	1 1/4							
K_L_G.960445	6	44.5	0445		1 3/4	86	66	66	0.8	85	M6 x 73
K_L_G.960483		48.3	0483	1 1/2							
K_L_G.960508		50.8	0508		2						
K_L_G.960540		54	0540								
K_L_G.970572	7	57.2	0572		2 1/4	121	94	93	0.8	117	M6 x 99
K_L_G.970603		60.3	0603	2							
K_L_G.970635		63.5	0635		2 1/2						
K_L_G.970700		70	0700		2 3/4						
K_L_G.970730		73	0730								
K_L_G.970761		76.1	0761	2 1/2	3						
K_L_G.980888	8	88.9	0889	3		147	120	118	0.8	143	M6 x 124
K_L_G.981020		102	1020		4						



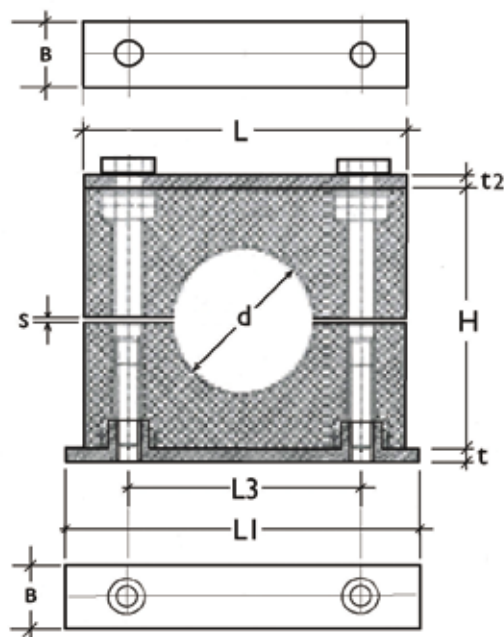
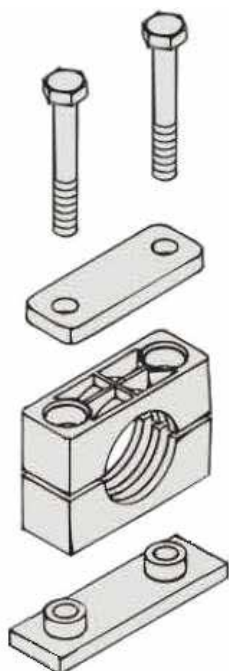
DIN 3015

Heavy Series Combination 3

Hex bolts, cover plate, clamp body,
welded base



KOVA CLAMP	K	S	H	P	G	•	3	7	1520	Pipe O.D
Plates & Bolts										
S:										
U:										
Z:										
Series										
H:										
Material										
P:										
M:										
A:										
C:										
O:										
S:										
Clamp Body Group										
(H)4:										
(H)5:										
(H)6:										
(H)7:										
(H)8:										
(H)9:										
Combination										
3:										
Interior surface										
G:										
S:										



HEAVY SERIES WELDED KOVA CLAMPS

HEAVY SERIES Combination 3														
Part #	Clamp body group	d diam. mm	Pipe OD code	inch ID	inch OD	L mm	L1 mm	L3 mm	H mm	s	B	t	t2	bolt
K_H_G.340420	H4	42	0420	1¼										
K_H_G.340445		44.5	0445		1¾									
K_H_G.340483		48.3	0483	1½										
K_H_G.340508		50.8	0508		2									
K_H_G.340550		55	0550			115	140	90	89	3	45	10	8	M12 x 100
K_H_G.340570		57	0570											
K_H_G.340603		60.3	0603	2										
K_H_G.340635		63.5	0635		2½									
K_H_G.340650		65	0650											
K_H_G.340700		70	0700											
K_H_G.350700	H5	70	0700											
K_H_G.350750		75	0750											
K_H_G.350761		76.1	0761	2½	3	150	180	122	120	3.5	60	10	8	M16 x 130
K_H_G.350800		80	0800											
K_H_G.350825		82.5	0825		3¼									
K_H_G.350889		88.9	0889	3										
K_H_G.3610889	H6	88.9	0889	3										
K_H_G.361000		100	1000											
K_H_G.361020		102	1020											
K_H_G.361080		108	1080		4	205	225	168	167	4	80	15	12	M20 x 190
K_H_G.361140		114	1140											
K_H_G.361270		127	1270											
K_H_G.361330	H7	133	1330											
K_H_G.371330		133	1330											
K_H_G.371400		140	1400	5										
K_H_G.371520		152	1520		6	250	270	205	200	4	90	15	12	M24 x 220
K_H_G.371590		159	1590		6¼									
K_H_G.371650	H8	165	1650		6½									
K_H_G.371680		168	1680	6										
K_H_G.381680		168	1680	6										
K_H_G.381778		177.8	1778		7									
K_H_G.381937		193.7	1937		7⅝	336	380	265	270	5	120	25	20	M30 x 300
K_H_G.382160	H9	216	2160		8½									
K_H_G.382190		219	2190	8										
K_H_G.392190		219	2190	8										
K_H_G.392730	H10	273	2730	10		470	520	395	410	8	160	30	25	M30 x 450
K_H_G.393240		324	3240	12										
K_H_G.3103560	H11	356	3560	14		630	680	534	530	20	168	30	25	M30 x 560
K_H_G.3104060		406	4060	16										
K_H_G.3114190	H11	419	4190	18		788	850	670	660	40	230	40	30	M36 x 710
K_H_G.3115080		508	5080	20										

DIN 3015

Heavy Series Combination 4

Hex bolts, cover plate, clamp body,
bolted base



KOVA CLAMP **K S H P G • 4 6 0889**

– Pipe O.D

Plates & Bolts

S: 316 SS

U: 304 SS

Z: Galvanised

Series

H: Heavy

Material

P: Polypropylene

M: Polyamide

A: Aluminium alloy

C: Steel

○: POM

S: Stainless Steel

Clamp Body Group

(H)4: Double bolt 42 – 70mm

(H)5: Double bolt 70 – 88.9mm

(H)6: Double bolt 88.9 – 133mm

(H)7: Double bolt 133 – 168mm

(H)8: Double bolt 168 – 219mm

(H)9: Double bolt 219 – 324mm

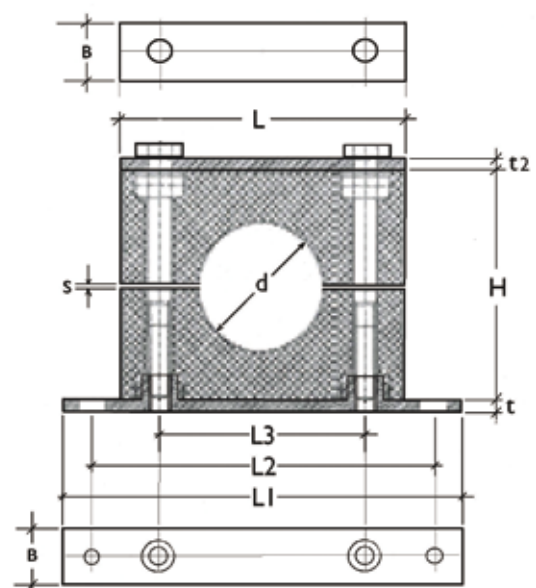
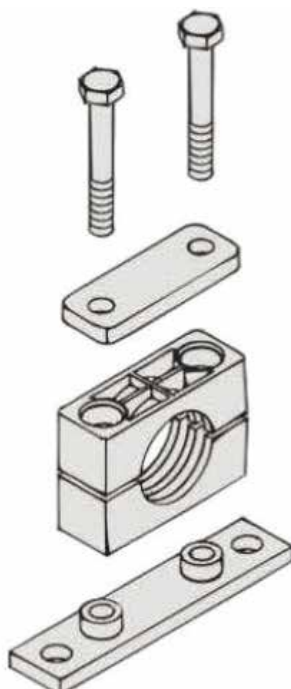
Combination

4: Hex head bolts, cover plate

- **Interior surface**

G: Grooved

S: Smooth



HEAVY SERIES BOLTED KOVA CLAMPS

HEAVY SERIES Combination 4															
Part #	Clamp body group	d diam. mm	Pipe OD code	inch ID	inch OD	L mm	L1 mm	L2 mm	L3 mm	H	s	B	t	t2	bolt
K_H_G.440420	H4	42	0420	1¼											
K_H_G.440445		44.5	0445		1¾										
K_H_G.440483		48.3	0483	1½											
K_H_G.440508		50.8	0508		2										
K_H_G.440550		55	0550			115	187	151	90	89	3	45	10	8	M12 x 100
K_H_G.440570		57	0570		2¼										
K_H_G.440603		60.3	0603	2											
K_H_G.440635		63.5	0635		2½										
K_H_G.440650		65	0650												
K_H_G.440700		70	0700												
K_H_G.450700	H5	70	0700												
K_H_G.450750		75	0750												
K_H_G.450761		76.1	0761	2½	3	150	238	194	122	120	3	60	10	8	M16 x 130
K_H_G.450800		80	0800												
K_H_G.450825		82.5	0825		3¼										
K_H_G.450889		88.9	0889	3											
K_H_G.4610889	H6	88.9	0889	3											
K_H_G.461000		100	1000												
K_H_G.461020		102	1020	3½											
K_H_G.461080		108	1080		4¼	205	309	257	168	167	4	80	15	12	M20 x 190
K_H_G.461140		114	1140	4											
K_H_G.461270		127	1270		5										
K_H_G.461330	H7	133	1330		5¼										
K_H_G.471330		133	1330		5¼										
K_H_G.471400		140	1400	5											
K_H_G.471520		152	1520		6	250	370	310	205	200	4	90	15	12	M24 x 220
K_H_G.471590		159	1590		6¼										
K_H_G.471650		165	1650		6½										
K_H_G.471680	H8	168	1680	6											
K_H_G.481680		168	1680	6											
K_H_G.481778		177.8	1778		7										
K_H_G.481937		193.7	1937		7	336	440	388	265	270	5	120	25	20	M30 x 300
K_H_G.482160		216	2160		8½										
K_H_G.482190	H9	219	2190	8											
K_H_G.492190		219	2190	8											
K_H_G.492730		273	2730	10		470	590	510	395	410	8	160	30	25	M30 x 450
K_H_G.493240	H10	324	3240	12											
K_H_G.4103560		356	3560	14		630	750	690	534	530	20	180	30	25	M30 x 560
K_H_G.4104060	H11	406	4060	16											
K_H_G.4114190		419	4190	18		788	850	819	670	660	40	230	40	30	M36 x 710
K_H_G.4115080		508	5080	20											

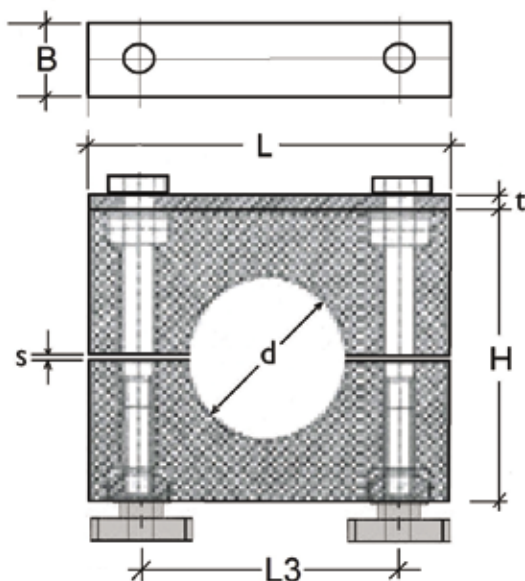
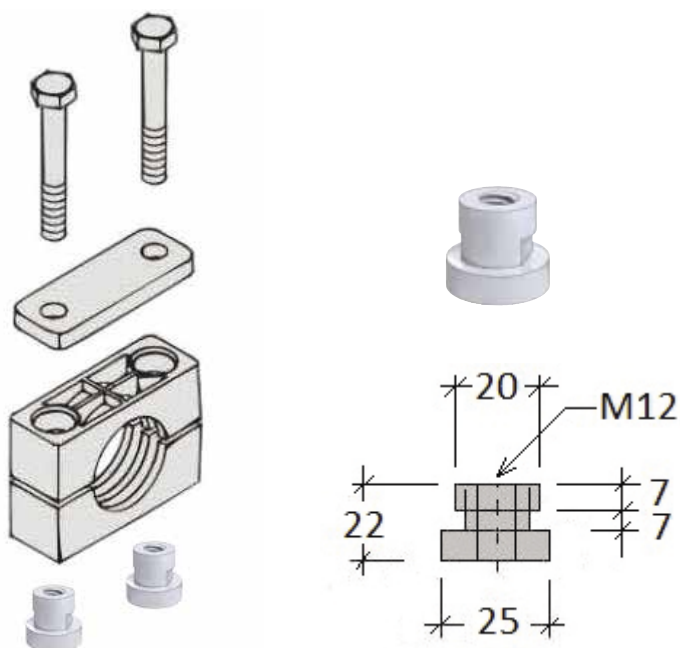
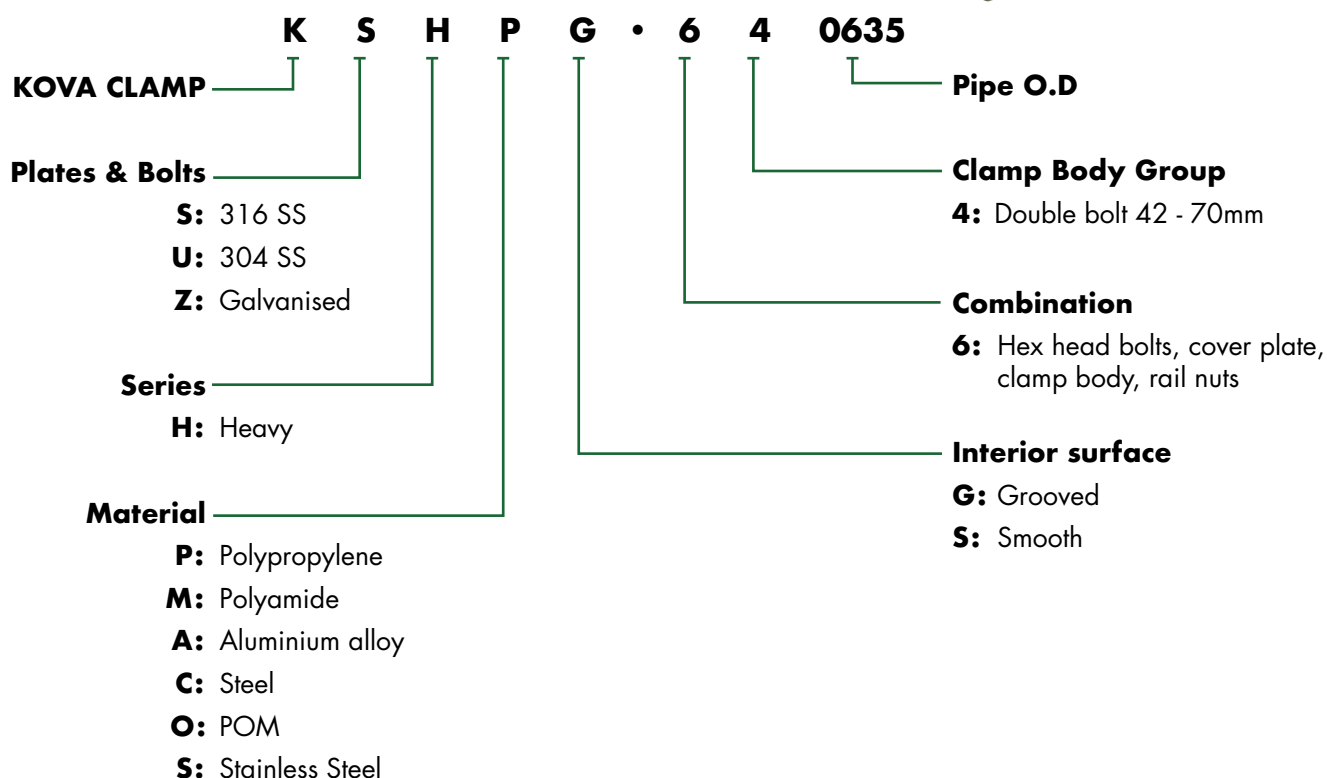


DIN 3015

Heavy Series Combination 6

Hex bolts, cover plate, clamp body, rail nuts*

*Note: to be used with Kova Heavy series rail KR22-H (see page 26)



HEAVY SERIES RAIL MOUNTED KOVA CLAMPS

HEAVY SERIES Combination 6												
Part #	Clamp body group	d diam. mm	Pipe OD code	inch ID	inch OD	L mm	L3 mm	H	s	B	t	bolt
K_H_G.640420	H4	42	0420	1 ¼								
K_H_G.640445		44.5	0445		1 ¾							
K_H_G.640483		48.3	0483	1 ½								
K_H_G.640508		50.8	0508		2							
K_H_G.640550		55	0550			115	90	89	3	45	8	M12 x 100
K_H_G.640570		57	0570		2 ¼							
K_H_G.640603		60.3	0603	2								
K_H_G.640635		63.5	0635		2 ½							
K_H_G.640650		65	0650									
K_H_G.640700		70	0700									





DIN 3015

Heavy Series Combination 9

Hex bolts, cover plate, clamp body*

Maximum stack, – 5 high

*Note: To be ordered with corresponding combination 3, 4 or 6 set



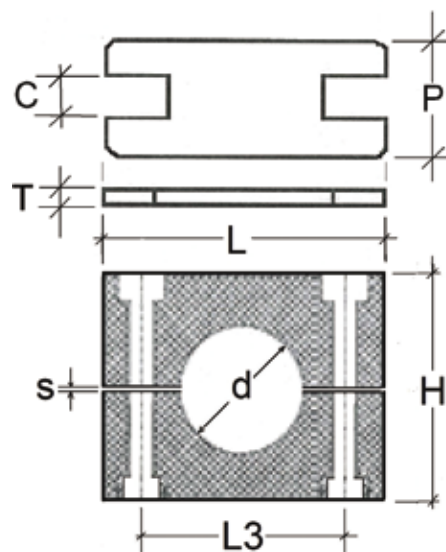
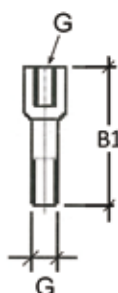
KOVA CLAMP	K	S	H	P	G	•	9	6	0889	Pipe O.D
Plates & Bolts										
		S: 316 SS								
		U: 304 SS								
		Z: Galvanised								
Series										
			H: Heavy							
Material										
				P: Polypropylene						
				M: Polyamide						
				A: Aluminium alloy						
				C: Steel						
				O: POM						
				S: Stainless Steel						
										Clamp Body Group
										(H)4: Double bolt 42 – 70mm
										(H)5: Double bolt 70 – 88.9mm
										(H)6: Double bolt 88.9 – 133mm
										(H)7: Double bolt 133 – 168mm
										(H)8: Double bolt 168 – 219mm
										Combination
										9: stacking bolts, safety lock plate, clamp body
										Interior surface
										G: Grooved
										S: Smooth



STACKING BOLTS

LOCK PLATE

CLAMP BODY



HEAVY SERIES STACKING KOVA CLAMPS

HEAVY SERIES Combination 9													
Part #	Clamp body group	d diam. mm	Pipe OD code	inch ID	inch OD	L mm	L3 mm	H mm	s	P	C	T	bolt
K_H_G.940420	H4	42	0420	1¼									
K_H_G.940445		44.5	0445		1¾								
K_H_G.940483		48.3	0483	1½									
K_H_G.940508		50.8	0508		2								
K_H_G.940550		55	0550			115	90	89	3	45	17	8	M12 x 110
K_H_G.940570		57	0570		2¼								
K_H_G.940603		60.3	0603	2									
K_H_G.940635		63.5	0635		2½								
K_H_G.940650		65	0650										
K_H_G.940700		70	0700										
K_H_G.950700	H5	70	0700										
K_H_G.950750		75	0750										
K_H_G.950761		76.1	0761	2½	3	150	122	120	3	60	22	8	M16 x 144
K_H_G.950800		80	0800										
K_H_G.950825		82.5	0825		3¼								
K_H_G.950889		88.9	0889	3									
K_H_G.9610889	H6	88.9	0889	3									
K_H_G.961000		100	1000										
K_H_G.961020		102	1020	3½									
K_H_G.961080		108	1080		4¼	205	168	167	4	80	28	12	M20 x 200
K_H_G.961140		114	1140	4									
K_H_G.961270		127	1270		5								
K_H_G.961330		133	1330		5¼								
K_H_G.971330	H7	133	1330		5¼								
K_H_G.971400		140	1400	5									
K_H_G.971520		152	1520		6	250	205	200	4	90	31	12	M24 x 240
K_H_G.971590		159	1590		6¼								
K_H_G.971650		165	1650		6½								
K_H_G.971680		168	1680	6									
K_H_G.981680	H8	168	1680	6									
K_H_G.981778		177.8	1778		7								
K_H_G.981937		193.7	1937		7⅝	336	265	270	5	120	49	15	M30 x 331
K_H_G.982160		216	2160		8½								
K_H_G.982190		219	2190	8									



Conforms to DIN 3015

Twin Series, Combination 3

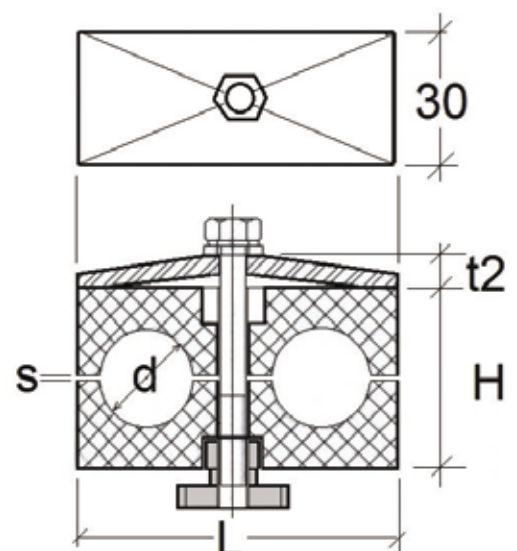
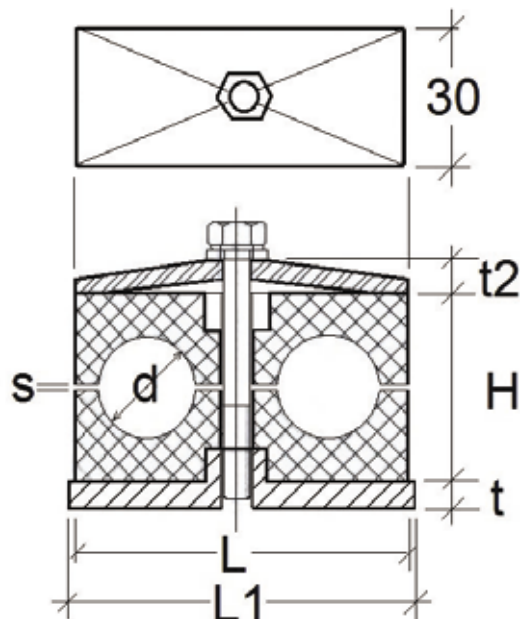
Welded base plate, cover plate,
clamp body, hex bolt

Twin Series, Combination 6

Rail nut, cover plate, clamp body,
hex bolt



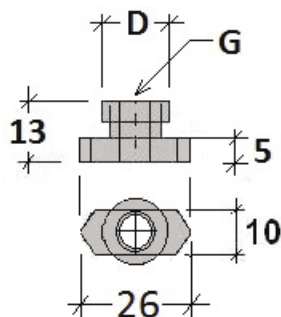
KOVA CLAMP	K	Z	T	P	G	•	3	2	0150	Pipe O.D
Plates & Bolts										Clamp Body Group
S:										1: 6 – 12mm
U:										2: 12.7 – 18mm
Z:										3: 19 – 25mm
										4: 26.9 – 30mm
										5: 32 – 42mm
Series										Combination
T:										3: Hex bolts, cover plate, clamp body, welded base plate
										6: Hex bolts, cover plate, clamp body, rail nuts
Material										Interior surface
P:										G: Grooved
M:										S: Smooth
A:										
C:										
O:										
S:										



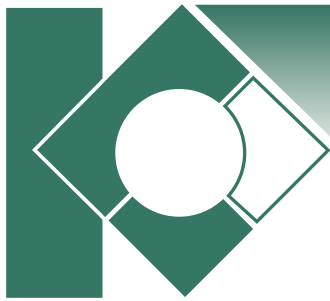
TWIN SERIES

KOVA CLAMPS

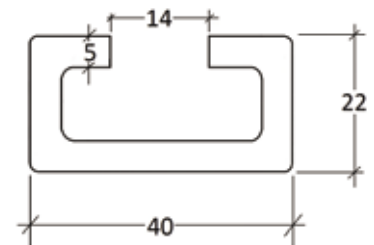
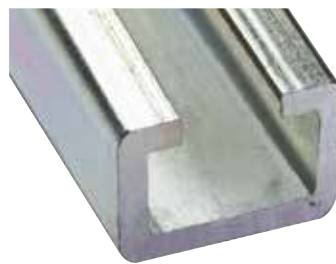
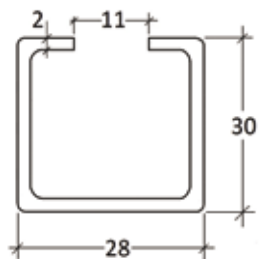
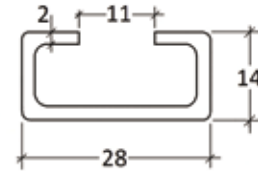
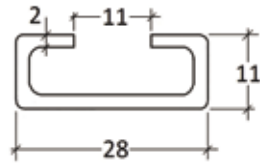
TWIN SERIES Combination 3 & Combination 6											
Part # Combination 3	Part # Combination 6	Clamp body group	d diam. mm both tubes	Pipe OD code	inch OD	L	L1	H	s tension clearance	t	t2
KZTPG.310060	KZTPG.610060	1	6	0060		36	37	27	0.8	3	7
KZTPG.310064	KZTPG.610064		6.4	0064	¼						
KZTPG.310080	KZTPG.610080		8	0080	⅓						
KZTPG.310095	KZTPG.610095		9.5	0095	⅜ tube						
KZTPG.310010	KZTPG.610010		10	0100	⅜						
KZTPG.310120	KZTPG.610120		12	0120							
KZTPG.320127	KZTPG.620127	2	12.7	0127	½ tube	53	55	27	0.8	5	7
KZTPG.320135	KZTPG.620135		13.5	0135							
KZTPG.320140	KZTPG.620140		14	0140							
KZTPG.320150	KZTPG.620150		15	0150							
KZTPG.320160	KZTPG.620160		16	0160	⅝						
KZTPG.320172	KZTPG.620172		17.2	0172							
KZTPG.320180	KZTPG.620180	3	18	0180		67	70	37	0.8	5	7
KZTPG.330190	KZTPG.630190		19	0190	¾ tube						
KZTPG.330200	KZTPG.630200		20	0200							
KZTPG.330213	KZTPG.630213		21.3	0213	½ pipe						
KZTPG.330220	KZTPG.630220		22	0220	⅞						
KZTPG.330250	KZTPG.630250		25	0250	1 tube						
KZTPG.340269	KZTPG.640269	4	26.9	0269	¾ pipe	80	85	40	0.8	5	7
KZTPG.340280	KZTPG.640280		28	0280							
KZTPG.340281	KZTPG.640281		30	0300							
KZTPG.350320	KZTPG.650320	5	32	0320	1¼ tube	106	110	53	0.8	5	7
KZTPG.350337	KZTPG.650337		33.7	0337	1 pipe						
KZTPG.350350	KZTPG.650350		35	0350							
KZTPG.350380	KZTPG.650380		38	0380	1½ tube						
KZTPG.350381	KZTPG.650381		40	0400							
KZTPG.350420	KZTPG.650420		42	0420	1¼ pipe						



KOVA nut Twin series			
Part #	Clamp body group	D	G
KRNT6	1	12	M6
KRNT8	2,3,4,5	14	M8

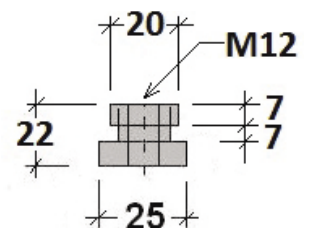
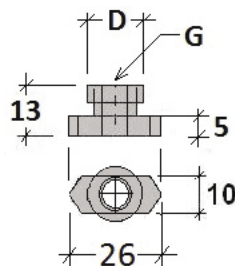


KOVA RAILS AND NUTS



Kova rails

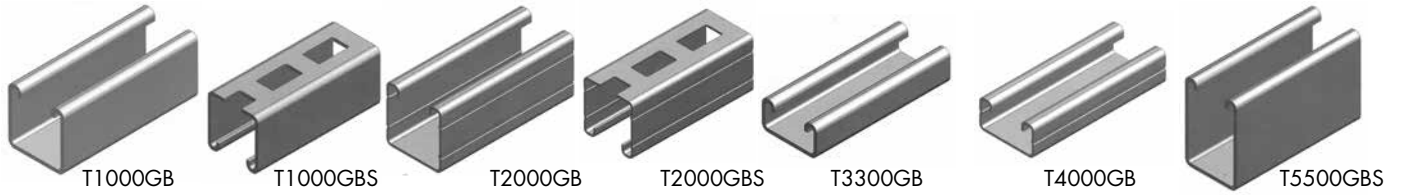
Part #	Description	width mm	height mm	length	Thickness mm	Finish
KZL-R.011	Kova rail low profile	28	11	2m	2	Galvabond
KZL-R.014	Kova rail medium profile	28	14	2m	2	Galvabond
KZL-R.030	Kova rail high profile	28	30	2m	2	Galvabond
KZH-R.022	Kova rail heavy series	40	22	2m	5	Galvabond



Kova nuts

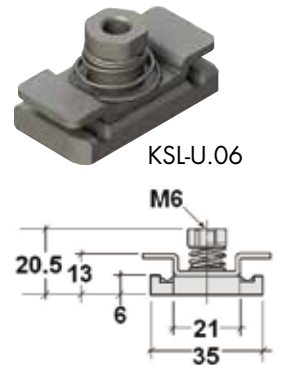
Part #	Description	Suits Rail	G Bolt	D	Finish
KZL-N.M06	Light series, plus Twin body group 1	KZL-R.011, KZL-R.014, KZL-R.030	M6	12	Zinc
KSL-N.M06	Light series, plus Twin body group 1	KZL-R.011, KZL-R.014, KZL-R.030	M6	12	Stainless Steel
KZT-N.M08	Twin series body group 2, 3, 4 & 5	KZL-R.011, KZL-R.014, KZL-R.030	M8	14	Zinc
KZH-N.M12	Heavy series body group 4	KZH-R.022	M12	20	Zinc

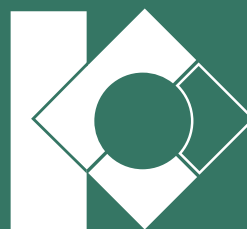
UNIVERSAL HEAVY SERIES STRUT SYSTEM



Universal Strut						
Part #	Description	width mm	height mm	length	Gauge mm	Finish
T1000GB	standard	41.3	41.3	6m	2.5	Galvabond
T1000HDGB	standard	42.3	41.3	6m	2.5	Hot dipped Galvanised
T1000SS	standard	41.3	41.3	6m	2.5	Stainless steel
T1000GBS	standard slotted	41.3	41.3	6m	2.5	Galvabond
T2000GB	light weight, ribbed	41.3	41.3	6m	1.6	Galvabond
T2000HDGB	light weight, ribbed	41.3	41.4	6m	1.6	Hot dipped Galvanised
T2000GBS	light weight, ribbed, slotted	41.3	41.5	6m	1.7	Hot dipped Galvanised
T3300GB	low profile	41.3	21.6	6m	2.5	Galvabond
T3300GBS	low profile, slotted	41.3	21.6	6m	2.5	Galvabond
T3300HDGB	low profile	41.3	21.6	6m	2.6	Hot dipped Galvanised
T4000GB	light weight, low profile, ribbed	41.3	21.6	6m	1.6	Galvabond
T4000GBS	light weight, low profile, ribbed, slotted	41.3	21.6	6m	1.6	Galvabond
T5500GB	very heavy duty	41.3	61.9	6m	2.5	Galvabond

Strut nuts		
Part #	Description	Finish
KZL-U.06	Strut nut M6 for bolting Kova clamps to universal strut.	Galvanised
KSL-U.06	Strut nut M6 for bolting Kova clamps to universal strut.	Stainless Steel
TSSN06	Strut nut M10	Galvanised
TSSN06L	Strut nut M10 long spring	Galvanised
TSSN06L-SS	Strut nut M6 long spring	Stainless Steel
TSSN08	Strut nut M8	Galvanised
TSSN08S	Strut nut M8 short spring	Galvanised
TSSN08L	Strut nut M8 long spring	Galvanised
TSSN10	Strut nut M10	Galvanised
TSSN10S	Strut nut M10 short spring	Galvanised
TSSN10L	Strut nut M10 long spring	Galvanised
TSSN10L-SS	Strut nut M10 long spring	Stainless Steel
TSSN12	Strut nut M12	Galvanised
TSSN12S	Strut nut M12 short spring	Galvanised
TSSN12L	Strut nut M12 long spring	Galvanised
TSSN12L-SS	Strut nut M12 long spring	Stainless Steel





KOVA CLAMPS

Distributed by:

Air Energy 
INDUSTRIAL PIPEWORK • COMPRESSED AIR SYSTEMS

NATIONAL STOCK AVAILABLE

Call us, we're here to help
1300 387 677
sales@airenergy.com.au

